



# Langley School District Continuity of Learning Plan

January 7, 2022



*“An innovative, inspiring and unified Learning Community”*

# Langley School District Continuity of Learning Plan

## MESSAGE FROM THE SUPERINTENDENT

We have all experienced many challenges over the last three school years due to the COVID-19 pandemic. The education system has needed to adjust repeatedly for the health and safety of our schools and communities. Together we adapted to changes, overcame obstacles, and celebrated our resilience. As a District community, we are continuing our work in ensuring students, staff and families are healthy and safe. We are doing our part to support public health's efforts in protecting our health care system and the most vulnerable in our community. Thank you to students, staff, families, employer groups and community partners for your ongoing work in helping respond to this pandemic.

As the new Superintendent of the Langley School District, I look forward to listening, collaborating, and supporting all of you in 2022 and the future.

Sincerely,



Mal Gill  
Superintendent of Schools

## PURPOSE

This plan is meant to provide students, staff and parents/guardians an overview of the information needed to prepare them for student learning in the upcoming months and beyond. This document is based on guidelines set by the Ministry of Education, Provincial Health Office, BC Centre for Disease Control and WorkSafeBC. As always, our District continues to take direction from these agencies and will continue to adapt to new guidelines when necessary.

Our District continues to consult with First Nations educational leaders and ya:yəstəl (Aboriginal Advisory Committee), administrators, employee partner groups, District Parent Advisory Council (DPAC) and parents. This engagement is expected to continue throughout the school year.

## BACKGROUND

On Wednesday December 29, 2021, as part of a health order, the province announced enhanced measures and a delayed start to the return of school for K-12 students on Monday, January 10, 2022. As announced, schools remained open during the week of January 4<sup>th</sup> to staff and children of Essential Service Workers, diverse learners, and learners that require additional supports (designated or non-designated). Administrators, teachers and staff were able to update and implement enhanced health and safety guidelines. This additional time was also spent to assess and plan for potential interruptions in learning, including Functional School Closures due to the spread of the Omicron variant in the community.

## GUIDING PRINCIPLES

This plan aligns with the province's guiding principles:

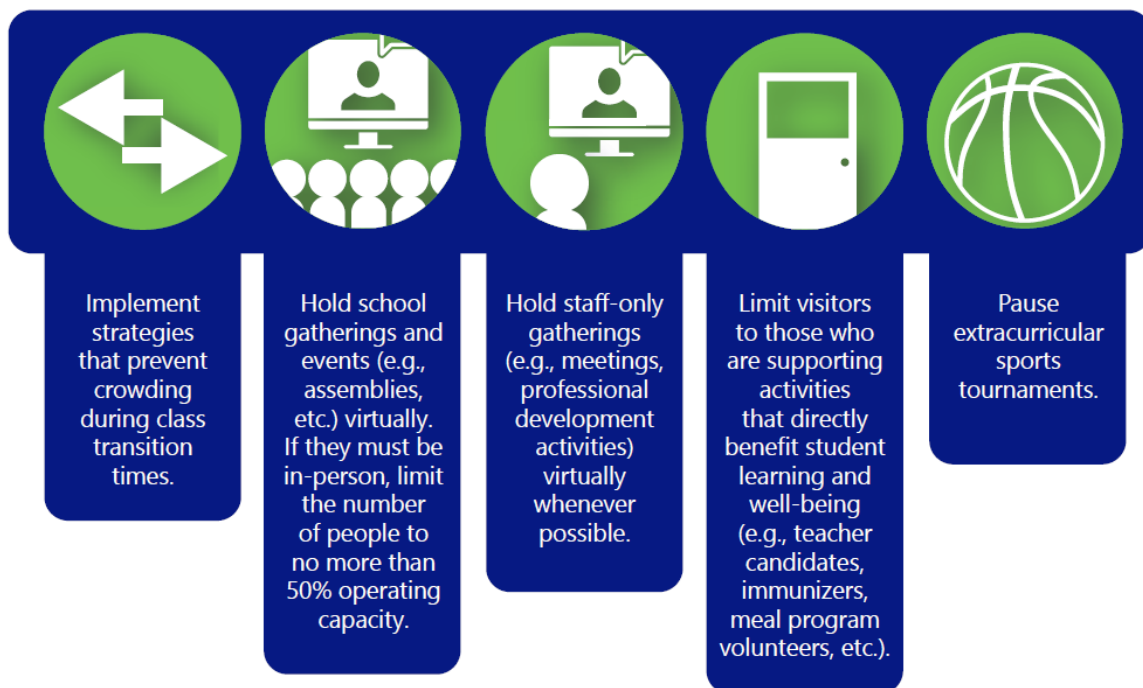
1. Ensure a healthy and safe environment for all students, families and employees.
2. Provide the services needed to support children of our essential service workers.
3. Support students with exceptional needs who are facing barriers.
4. Provide continuity of educational opportunities for all students.

## Health and Safety

### SCHOOL MEASURES

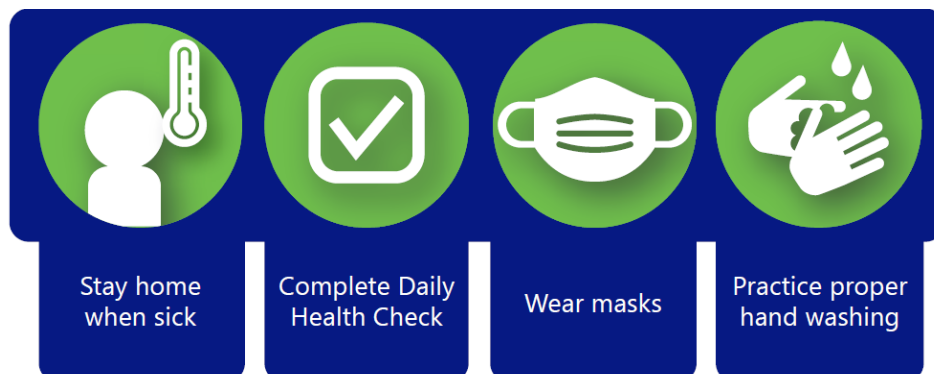
Health and safety continues to be our top priority. The District developed the document [Guidelines for Schools K-12 \(COVID-19\)](#) which implements the [Provincial COVID-19 Health & Safety Guidelines for K-12 Settings](#), [COVID-19 Public Health Guidance for K-12 Settings](#), and WorkSafeBC guidelines. Each District site (including the School Board Office) develops a site-specific COVID-19 Health and Safety Plan which is posted publicly in all schools/sites.

As announced by the province in late December 2021, enhanced measures in K-12 schools will be in place beginning Monday, January 10, 2022, as outlined in this addendum [here](#). A snapshot of these measures is outlined in the infographic below. Existing health and safety measures prior to January 10, 2022 remain in place. It is important to note, there may be some variations in the implementation of the following measures across the District due to building configuration and school population.



### PERSONAL MEASURES

It is everyone's responsibility to do their part in helping keep our school community safe. The District continues to remind students, staff, and any visitors to follow daily personal measures outlined in the infographic below.



## STAFF/STUDENT ILLNESS IN SCHOOL

If a student or staff member is sick and shows symptoms of COVID-19, designated staff assisting the student or staff will:

- Send staff home and encourage self-management and/or seeking treatment from a medical health provider.
- Isolate the student in a safe space and contact the parents/guardians to pick-up their child.
- Ensure proper cleaning and disinfecting procedures if required.

## COVID-19 CONTACT TRACING, CASE MANAGEMENT AND EXPOSURE NOTIFICATIONS

Fraser Health's process for contact tracing, case management, and exposure notifications is changing. To that end, the former processes that have been in place previously will not continue. As announced by the province in a COVID-19 update on January 7, 2022, schools will focus efforts on tracking attendance and monitoring for illnesses. As per Ministry guidance, students and staff do not need to disclose if their absence is specific to COVID-19, however those who test positive for COVID-19 should be diligent in ensuring their school is aware their absence is illness-related.

School administrators will contact public health in the event there is a high volume of absences of staff and/or students due to illness. This may signal the following response(s):

- A need for further investigation.
- An intervention (such as the use of rapid antigen tests, health closure, and/or functional closure).

If determined that absences due to illness signal a concern after consultation with Fraser Health, the school will notify students, staff and families with a letter. More information is found on the province's guiding document [COVID-19 Protocols for School & District Administrators and Staff: Management of School-Associated Activity](#).

# Continuity of Learning

## PREPARING FOR POTENTIAL SCHOOL CLOSURES

As directed by the province, the District is planning for potential school closures due to COVID-19 impacts. The following outlines information to help students, staff and families understand school closures and processes. With the changing nature of the pandemic, it is important to note school closures are difficult to predict and that there are many factors considered. Based on the experiences of other Districts which have faced school closures during the pandemic, we have learned that each situation is unique. The District will continue to work closely with Fraser Health and will follow the most up-to-date guidance to ensure health and safety and to minimize disruptions in student learning.

There are two types of closures which could impact our schools:

1. **Health Closure** of a school, which is determined by Fraser Health Authority due to the COVID-19 case count in, or related to, a school.
2. **Functional Closure** of a school, which is determined by the school district due to a lack of staff to provide the required level of teaching, supervision, support and/or custodial services to ensure the health and safety of students. This would likely be due to high absenteeism of all staff or certain employees required for a school to function and the inability to replace those absences.

### ***What factors may result in a potential Functional Closure of an individual school?***

The school district will monitor staff attendance for high absenteeism. If there is a significant number of staff away, the District will consult with Fraser Health and seek any additional community information and context. If Human Resources reports an inability to fill replacements for staff and the school is unable to provide a safe learning environment for students, thereafter, the Superintendent makes a decision and announces a Functional Closure.

The above summary of considerations may be amended with increased experience of Functional Closures, knowledge shared from other Districts and guidance from public health.

### ***What would a potential Functional Closure look like?***

It is important to note, public health has not declared an outbreak at the school when a Functional Closure is under consideration. In the event of a Functional Closure, the District will make an announcement to students, staff and families through regular communication methods. The first day of a Functional Closure may involve staff preparations, communicating instructions, and sharing materials/devices with students and families. As soon as practicable, staff will provide online instruction, student support and further communication. Staff absence levels will continually be assessed and a decision to return to regular in-person instruction will be considered.

### ***How are we preparing for a potential school closure?***

#### **TRAINING AND ORIENTATION FOR STAFF**

- Ensuring teachers and staff are ready to use Microsoft TEAMS.
- Training teachers and staff about online learning best practices through professional development sessions and shared resources.

#### **CREATING PLANS FOR STUDENTS TO ACCESS TECHNOLOGY**

- Ensuring students have access to devices.
- Ensuring students have access to Microsoft TEAMS.

#### **EMPLOYEE/STUDENT ATTENDANCE**

- Recording and tracking attendance of staff and students.
- Reporting to Fraser Health any significant amount of absenteeism in school population (varies depending on site or reason for absence).
- Working with Fraser Health to determine the need to close a school.

#### **TRANSPORTATION SERVICE**

*Due to a lack of staff to be able to provide the required level of transportation services for students, some routes may be adjusted, delayed, and/or cancelled.*

- Communicating any instructions for transportation riders related to school closure procedures. In the event of a closure, information will be sent directly to riders.

#### **STRONGSTART/EARLY LEARNING PROGRAMS**

- Communicating any instructions for StrongStart related to school closures procedures on our District website [here](#).
- Communicating any instructions for Welcome Centre at Donna Gabriel Robins Elementary programming related to school closures on our District website [here](#).

### COMMUNITY USER GROUPS/RENTALS/CHILDCARE PROVIDERS

- Communicating any instructions for community user groups/rentals/childcare providers related to school closure procedures. In the event of a closure, information will be shared directly to groups and providers. Check with your group or provider if applicable.

### *Supporting our Students During a Closure*

Our District celebrates the diversity of our student population and communities. Our District will have processes in place to provide learning support for all students in the event of a closure.

### ONLINE LEARNING

- All teachers will provide online learning through the Microsoft TEAMS platform.
- Students enrolled at the Langley Education Centre and U-Connect will continue to utilize their Learning Management Systems in addition to Microsoft TEAMS.

### LEARNING SUPPORT SERVICES

- Resource teachers and support staff will continue to provide direct support to students with diverse abilities to meet their Individual Education Plan (IEP) goals.
- Resource teachers, classroom teachers and support staff will work together to create inclusive and compassionate online classroom communities.
- District Learning Support Services staff will continue to equip and support students, families and educators to ensure that all students are able to access online learning opportunities and develop plans that allow learning to continue at home in the event of a closure.

### ABORIGINAL PROGRAM

- Aboriginal Program staff will continue to provide services to enhance each self-identified Aboriginal student's positive personal and cultural identity. This will include providing emotional, physical, spiritual, and intellectual support and advocacy, as well as strengthening connections for students and family to school, District and community to enhance a sense of belonging.
- Our District staff will continue to consult and collaborate with First Nations educational leaders in the local communities to adapt or make any necessary changes in instruction of learning in the event of a closure.

### ENGLISH LANGUAGE LEARNERS

- Our District staff will continue to work with English Language Learners and their families to provide support to ensure student success online in the event of a closure.
- ELL Teachers will provide online support to students to meet their Annual Instructional Plan (AIP) goals while collaborating with classroom teachers.

## Conclusion

The District acknowledges this plan may change with the onset of new directives from the Ministry of Education and the Provincial Health Office. The District will continue to be flexible and prepared to adjust to new protocols as well as communicate any changes to students, staff and parents/guardians.